

## **Appendix to Chapter 3: The Scoping Consultations**

### **Appendix 3.3: Letters sent by Inis Consultancy to Birdwatch Ireland; Bat Conservation Ireland; IFI; and NPWS**

The data and descriptions in this appendix have informed the cumulative evaluations in the EIA Main Report.



Birdwatch Ireland,  
Unit 20,  
Block D,  
Bullford Business Campus,  
Greystones  
Co. Wicklow

Date: 06/06/19

**Re: Scoping for Upperchurch Windfarm (UWF) Grid Connection, County Tipperary.**

Dear Sir/Madam,

In order to prepare an EIA Report, Inis Environmental Consultants Ltd, on behalf of our client, are currently consulting on the potential environmental effects of a **grid connection development**, Upperchurch Windfarm (UWF) Grid Connection. This is in the context of the December 2018 refusal of a previous iteration of UWF Grid Connection (An Bord Pleanála Ref: PL92.301959, DAU Ref: **G Pre00048/2016**).

The route of the underground cabling, refused by the Board, was a predominately cross-country route along farm/forestry roads and lands. Following an examination of the Board's decision and the Board's Inspector's Report, the route of the 110kV underground cabling part is now being redesigned. The revised UWF Grid Connection now proposed will consist of an **underground cabling route predominately along the public road corridor to a new 110kV substation** (as before) **at Mountphilips**.

The revised UWF Grid Connection comprises of 1) a new **110kV electrical substation in Mountphilips townland** connecting to the adjacent existing Killonan - Nenagh 110kV overhead line in agricultural grassland, 2km north of Newport and 23km west of the consented (but not constructed) Upperchurch Windfarm and 2) a **new underground cable connecting Mountphilips Substation to Upperchurch Windfarm Substation**, through the installation of underground cables mainly along the public road. The route of the underground cable (110kV UGC) **30.5 km in length, will follow a generally west/east course along the Newport to Thurles Regional Road R503**.

As part of the consultation process, we wish to provide Birdwatch Ireland with this description and mapping (Figure 1) for the revised UWF Grid Connection development, so that you can participate in the scoping process, if you have concerns for your area of expertise.

Kind Regards



**Alex Copland** BSc PhD

Senior Ecologist

For and on behalf of INIS Environmental Consultants Ltd  
Email transmission 060619

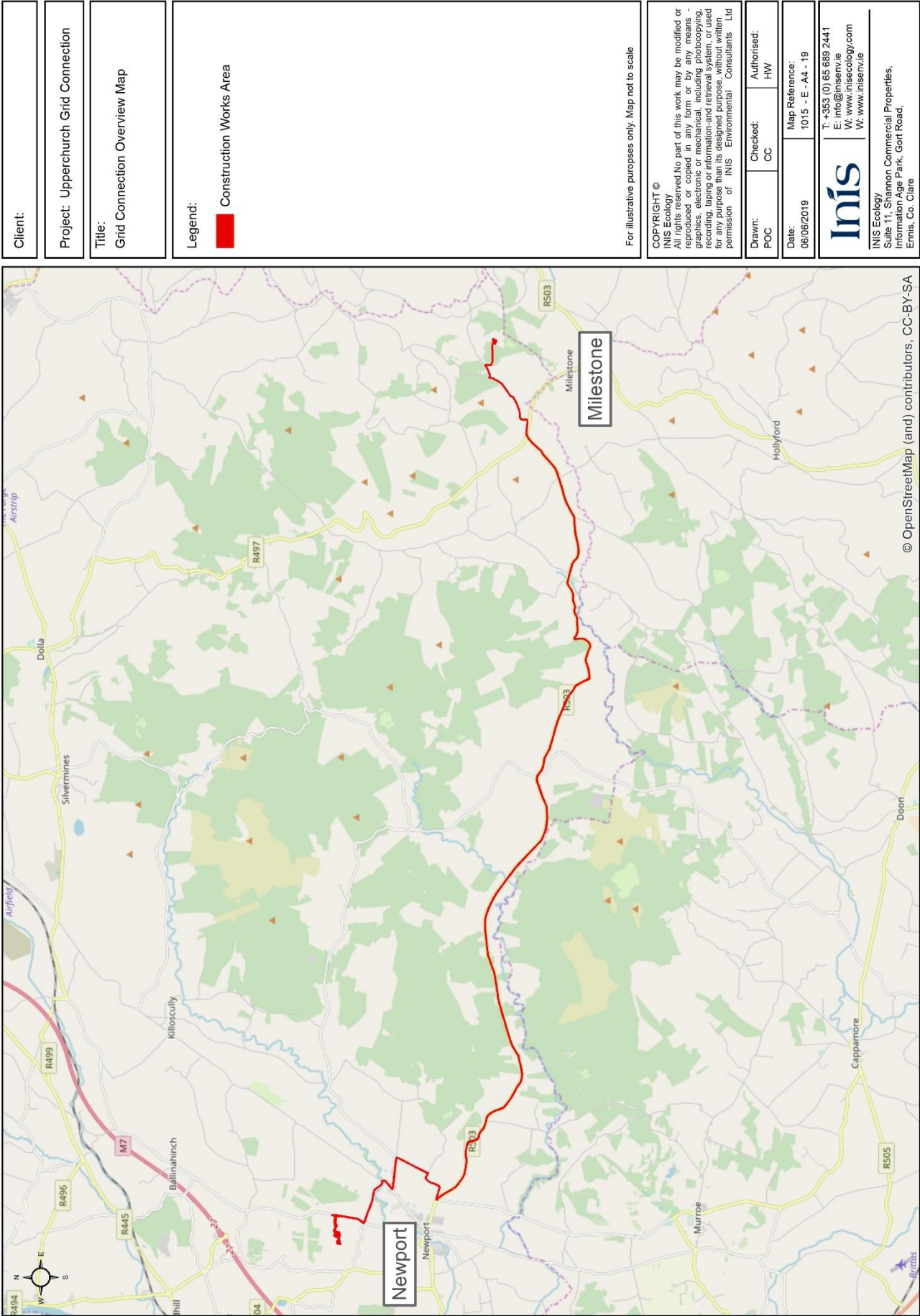


Figure 1 Proposed underground cable route of Upperchurch Wind Farm Grid Connection

Bat Conservation Ireland,  
Ulex House,  
Drunheel,  
Virginia,  
Co. Cavan

Date: 06/06/19

**Re: Scoping for Upperchurch Windfarm (UWF) Grid Connection, County Tipperary.**

Dear Sir/Madam,

In order to prepare an EIA Report, Inis Environmental Consultants Ltd, on behalf of our client, are currently consulting on the potential environmental effects of a **grid connection development**, Upperchurch Windfarm (UWF) Grid Connection. This is in the context of the December 2018 refusal of a previous iteration of UWF Grid Connection (An Bord Pleanála Ref: PL92.301959, DAU Ref: **G Pre00048/2016**).

The route of the underground cabling, refused by the Board, was a predominately cross-country route along farm/forestry roads and lands. Following an examination of the Board's decision and the Board's Inspector's Report, the route of the 110kV underground cabling part is now being redesigned. The revised UWF Grid Connection now proposed will consist of an **underground cabling route predominately along the public road corridor to a new 110kV substation** (as before) **at Mountphilips**.

The revised UWF Grid Connection comprises of 1) a new **110kV electrical substation in Mountphilips townland** connecting to the adjacent existing Killonan - Nenagh 110kV overhead line in agricultural grassland, 2km north of Newport and 23km west of the consented (but not constructed) Upperchurch Windfarm and 2) a **new underground cable connecting Mountphilips Substation to Upperchurch Windfarm Substation**, through the installation of underground cables mainly along the public road. The route of the underground cable (110kV UGC) **30.5 km in length, will follow a generally west/east course along the Newport to Thurles Regional Road R503**.

As part of the consultation process, we wish to provide Bat Conservation Ireland with this description and mapping (Figure 1) for the revised UWF Grid Connection development, so that you can participate in the scoping process, if you have concerns for your area of expertise.

Kind Regards



**Alex Copland** BSc PhD

Senior Ecologist

For and on behalf of INIS Environmental Consultants Ltd  
Email transmission 060619



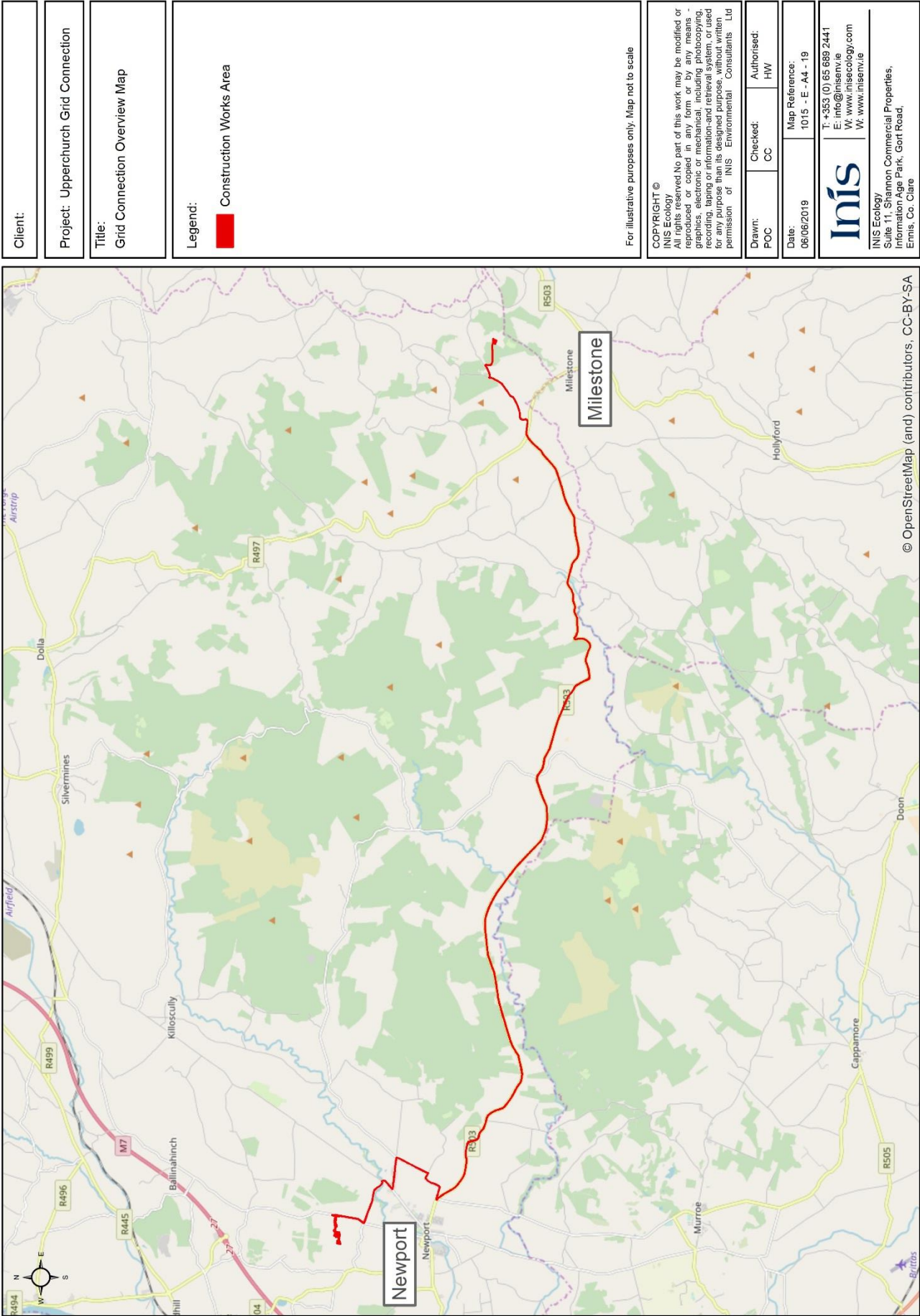


Figure 1 Proposed underground cable route of Upperchurch Wind Farm Grid Connection

Inland Fisheries Ireland,  
Anglesea St,  
Clonmel,  
Co. Tipperary.

**Date:** 13/03/19

**Re: Scoping for Upperchurch Windfarm (UWF) Grid Connection, County Tipperary.**

To whom it may concern,

In order to prepare an EIA Report, Inis Environmental Consultants Ltd, on behalf of our client, are currently consulting on the potential environmental effects of a **grid connection development**, Upperchurch Windfarm (UWF) Grid Connection. This is in the context of the December 2018 refusal of a previous iteration of UWF Grid Connection (An Bord Pleanála Ref: PL92.301959).

The route of the underground cabling, refused by the Board, was a predominately cross-country route along farm/forestry roads and lands. Following an examination of the Board's decision and the Board's Inspector's Report, the route of the 110kV underground cabling part is now being redesigned. The revised UWF Grid Connection now proposed will consist of an **underground cabling route predominately along the public road corridor to a new 110kV substation** (as before) **at Mountphilips**. The revised plan will be submitted to the Planning Authority in ~ May 2019.

The revised UWF Grid Connection comprises of 1) a new **110kV electrical substation in Mountphilips townland** connecting to the adjacent existing Killonan - Nenagh 110kV overhead line in agricultural grassland, 2km north of Newport and 23km west of the consented (but not constructed) Upperchurch Windfarm and 2) a **new underground cable connecting Mountphilips Substation to Upperchurch Windfarm Substation**, through the installation of underground cables mainly along the public road. The route of the underground cable (110kV UGC) **29km in length, will follow a generally west/east course along the Newport to Thurles Regional Road R503**.

As part of the consultation process, I wish to provide the IFI with this description and mapping (Figure 1 and 2) for the revised UWF Grid Connection development, so that you can participate in the scoping process, if you have concerns for your area of expertise.

Kind regards



**Howard Williams** BSc CEnv MCIEEM CBiol MRSB MIFM

Chief Executive Officer  
Chartered Environmentalist  
Chartered Biologist

For and on behalf of INIS Environmental Consultants Ltd

Email transmission 130319



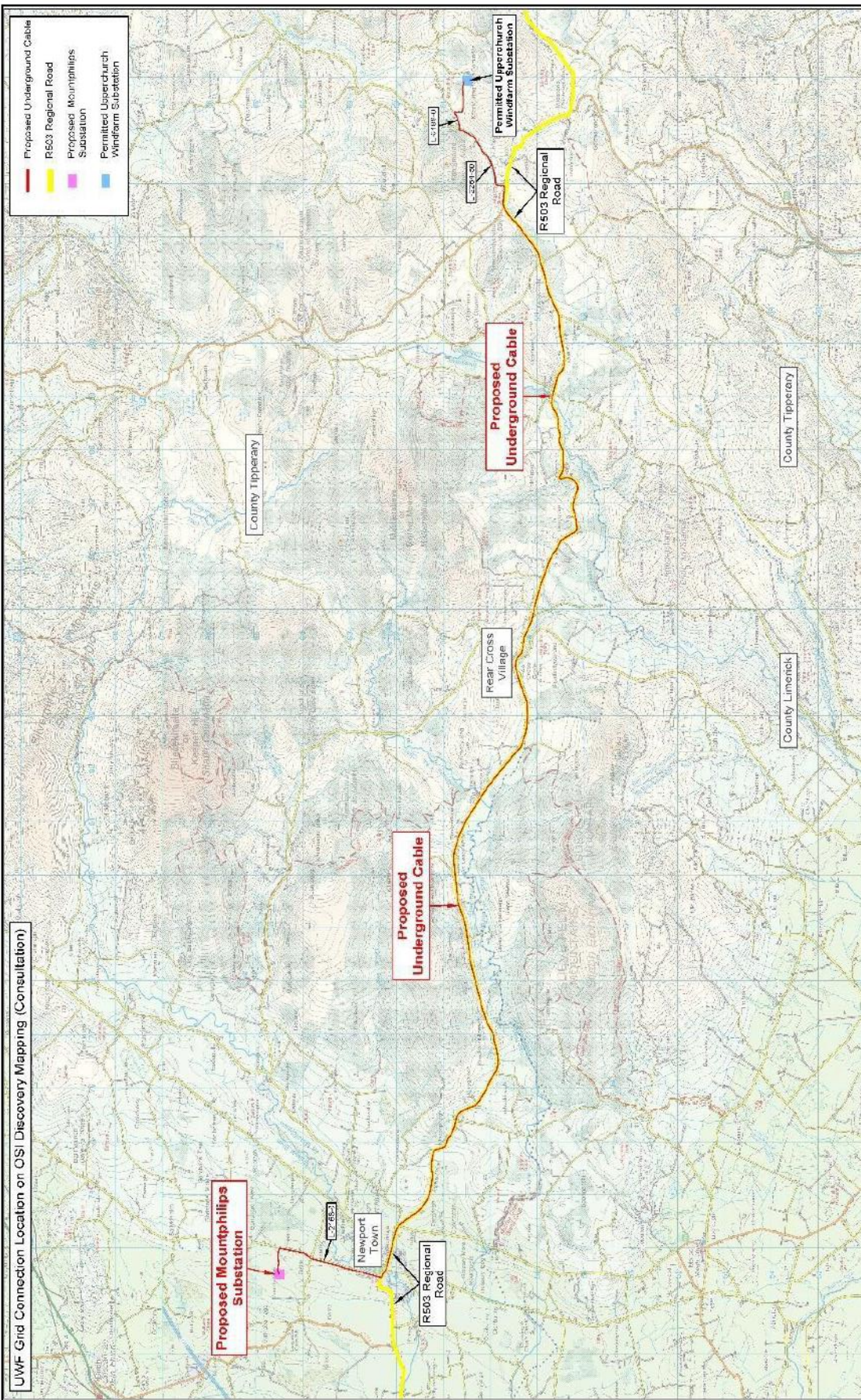


Figure 2

Regional context map showing proposed location of Upperchurch Grid Connection – map provided 13/03/19



Inland Fisheries Ireland,  
Anglesea St,  
Clonmel,  
Co. Tipperary.

**Date:** 06/06/19

**Re: Scoping for Upperchurch Windfarm (UWF) Grid Connection, County Tipperary. Change to Proposed Grid Connection Route**

Dear Sir/Madam,

With reference to a consultation letter provided to Inland Fisheries Ireland on 13/03/19 we would like to present an amendment to the proposed grid connection route as described therein.

The proposed underground cable route, will no longer cross the Mulkear River on the R503 Road in Newport Town centre, instead crossing the Mulkear River 1.6 km north of Newport Town. The amendment to the route is shown in figure 1 overleaf. The remaining section of the proposed underground cable route remains unchanged from the previously provided map, which is re-attached also for completeness.

We welcome any further observations.

Kind Regards



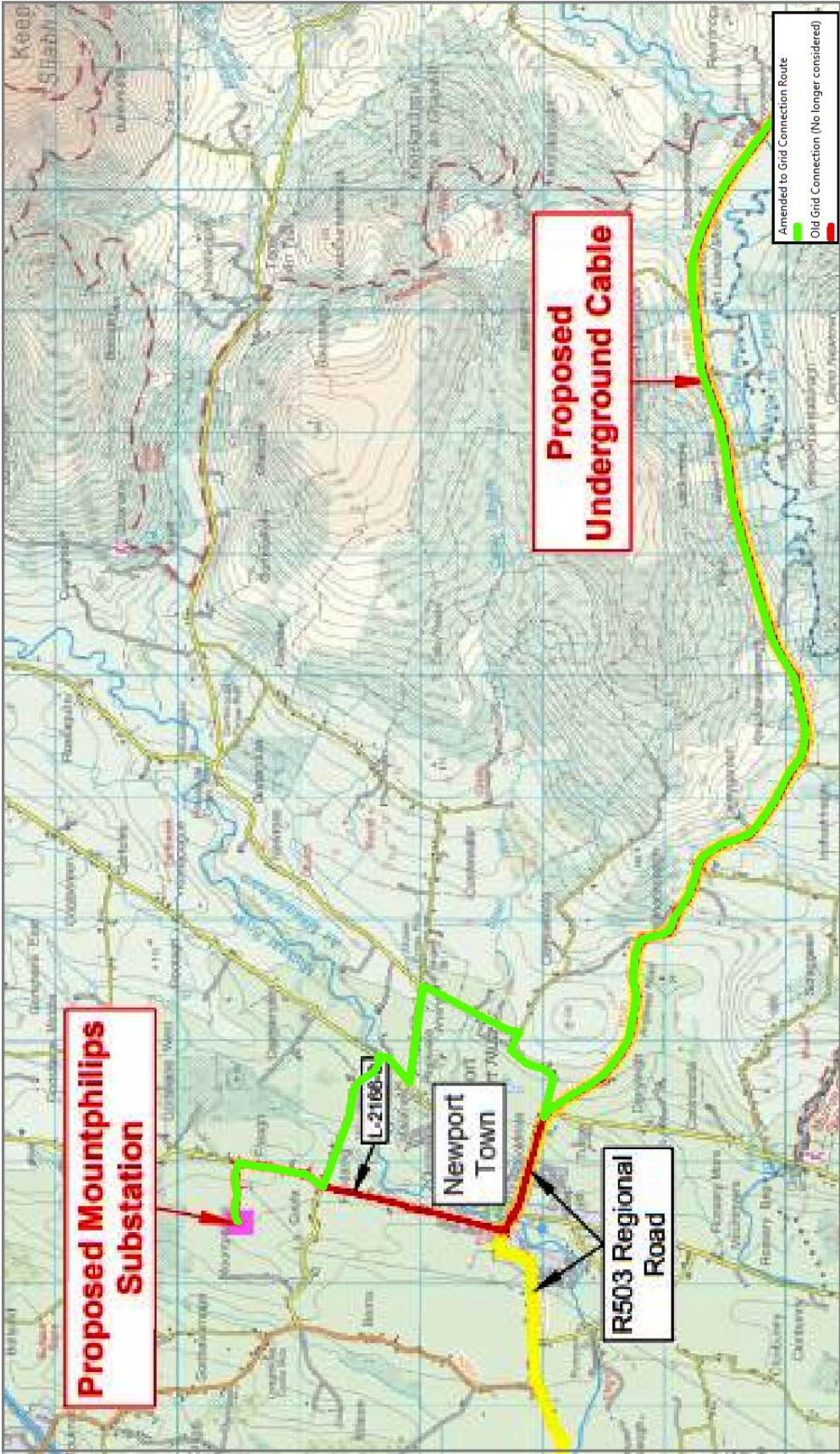
---

**Howard Williams** BSc CEnv MCIEEM CBiol MRSB MIFM

Chief Executive Officer

Chartered Environmentalist  
Chartered Biologist

For and on behalf of INIS Environmental Consultants Ltd  
Email transmission 060619



**Figure 1** Proposed change to grid connection route

The Manager,  
Development Applications Unit,  
Department of the Environment, Heritage and Local Government,  
Newtown Road,  
Wexford.

Date: 13/03/19

**Re: Scoping for Upperchurch Windfarm (UWF) Grid Connection, County Tipperary.**

Dear Sir/Madam,

In order to prepare an EIA Report, Inis Environmental Consultants Ltd, on behalf of our client, are currently consulting on the potential environmental effects of a **grid connection development**, Upperchurch Windfarm (UWF) Grid Connection. This is in the context of the December 2018 refusal of a previous iteration of UWF Grid Connection (An Bord Pleanála Ref: PL92.301959, DAU Ref: **G Pre00048/2016**).

The route of the underground cabling, refused by the Board, was a predominately cross-country route along farm/forestry roads and lands. Following an examination of the Board's decision and the Board's Inspector's Report, the route of the 110kV underground cabling part is now being redesigned. The revised UWF Grid Connection now proposed will consist of an **underground cabling route predominately along the public road corridor to a new 110kV substation** (as before) **at Mountphilips**. The revised plan will be submitted to the Planning Authority in ~ May 2019.

The revised UWF Grid Connection comprises of 1) a new **110kV electrical substation in Mountphilips townland** connecting to the adjacent existing Killonan - Nenagh 110kV overhead line in agricultural grassland, 2km north of Newport and 23km west of the consented (but not constructed) Upperchurch Windfarm and 2) a **new underground cable connecting Mountphilips Substation to Upperchurch Windfarm Substation**, through the installation of underground cables mainly along the public road. The route of the underground cable (110kV UGC) **29km in length, will follow a generally west/east course along the Newport to Thurles Regional Road R503**.

As part of the consultation process, I wish to provide the DAU with this description and mapping (Figure 1 and 2) for the revised UWF Grid Connection development, so that you can participate in the scoping process, if you have concerns for your area of expertise.

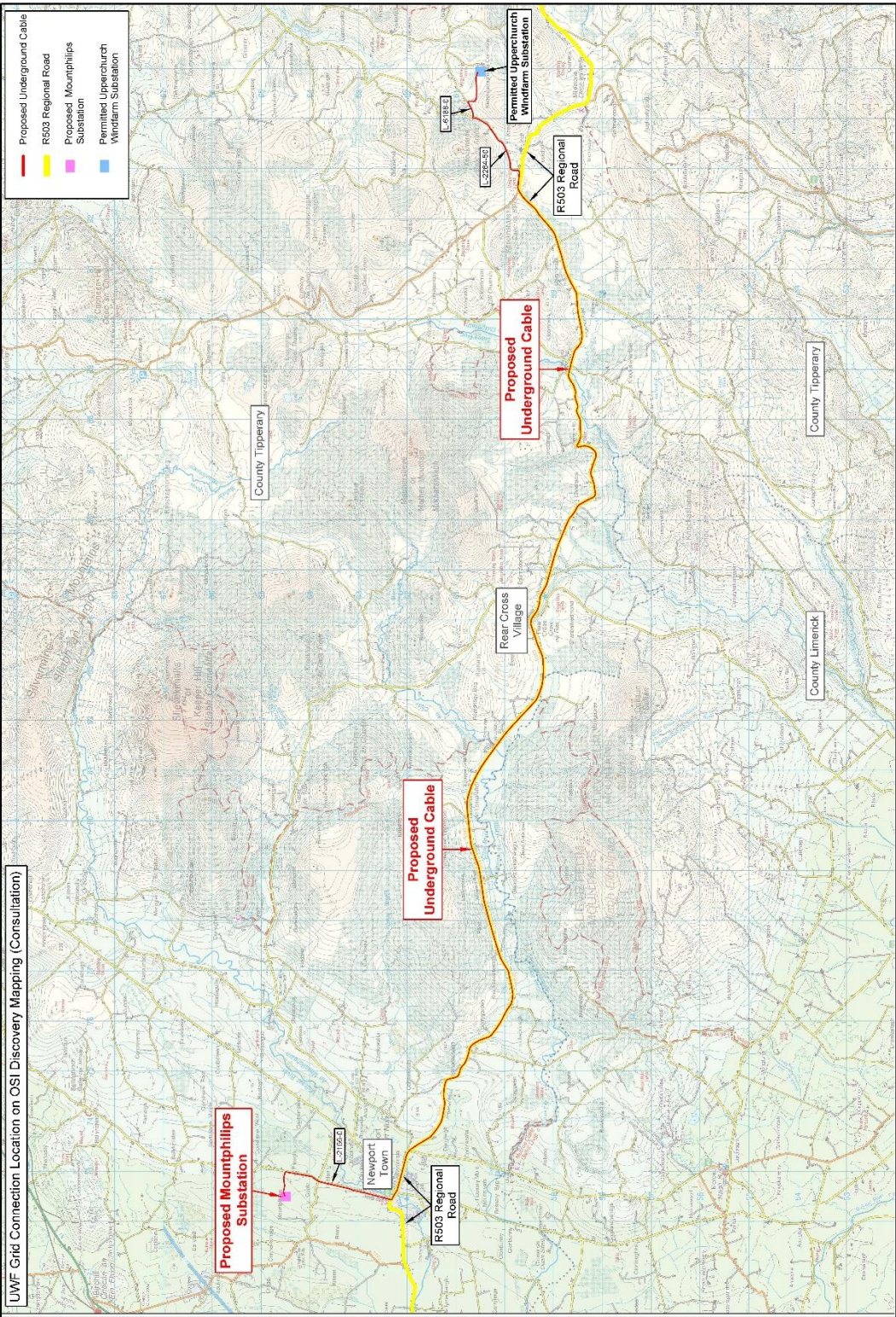
Kind regards



**Howard Williams** BSc CEnv MCIEEM CBIol MRSB MIFM

Chief Executive Officer  
Chartered Environmentalist  
Chartered Biologist  
For and on behalf of INIS Environmental Consultants Ltd  
Email transmission 130319





**Figure 1:** Regional context map showing proposed location of the Upperchurch Windfarm Grid Connection.



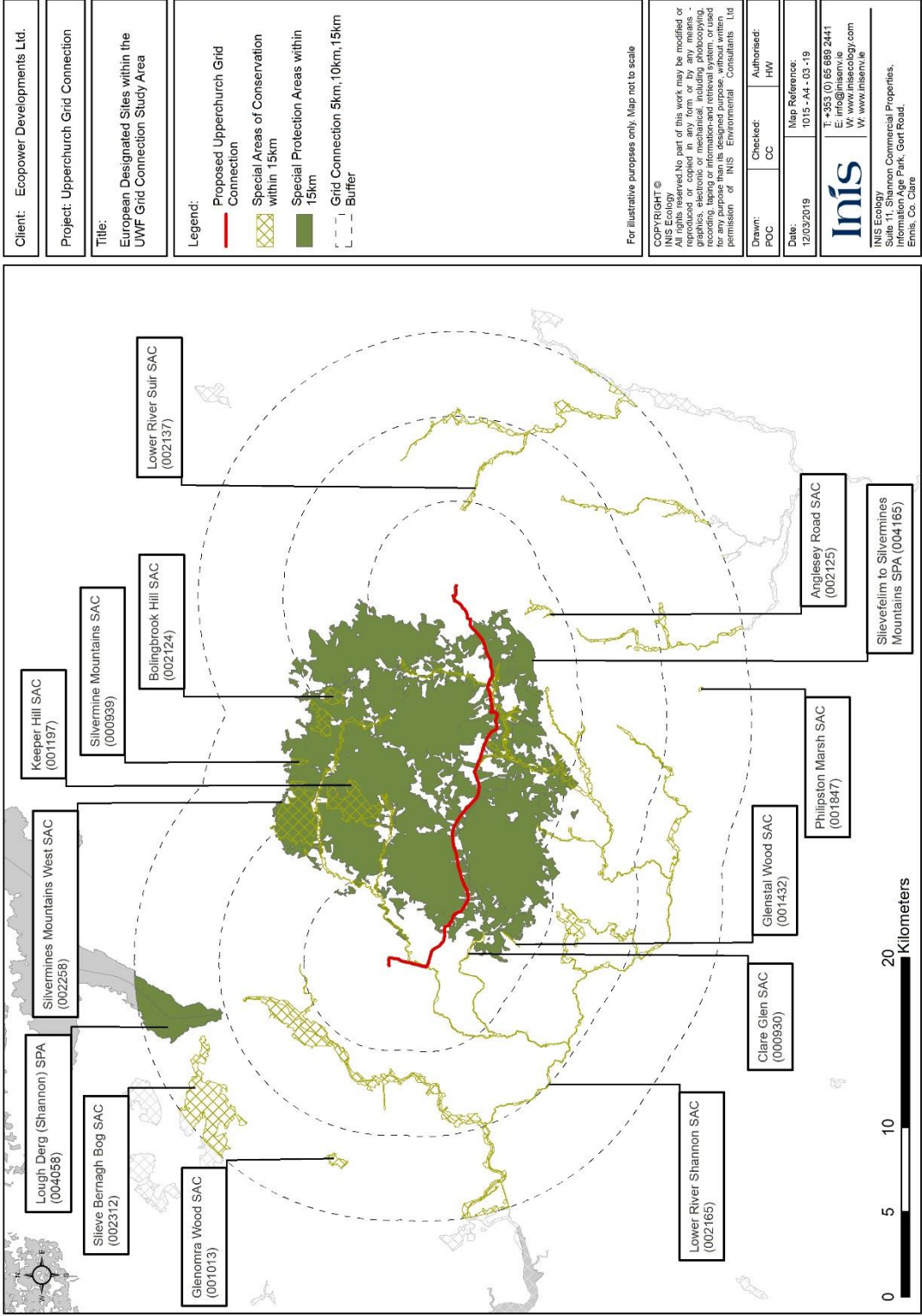


Figure 2: European Designated Sites within 15km of the proposed Upperchurch Windfarm Grid Connection.





The Manager,  
Development Applications Unit,  
Department of the Environment, Heritage and Local Government,  
Newtown Road,  
Wexford

**Date:** 22/05/19

**Re: Scoping for Upperchurch Windfarm (UWF) Grid Connection, County Tipperary. Change to Proposed Grid Connection Route.**

Dear Sir/Madam,

With reference to a previous consultation letter provided to the DAU on 13/03/19 we would like to present an amendment to the proposed grid connection route as described therein.

The proposed underground cable route, will no longer cross the Mulkear River on the R503 Road in Newport Town centre, instead crossing the Mulkear River 1.6 km north of Newport Town. The amendment to the route is shown in figure 1 overleaf. The remaining section of the proposed underground cable route remains unchanged from the previously provided map, which is re-attached also for completeness.

We welcome any further observations.

Kind Regards



---

**Howard Williams** BSc CEnv MCIEEM CBiol MRSB MIFM

Chief Executive Officer

Chartered Environmentalist  
Chartered Biologist

For and on behalf of INIS Environmental Consultants Ltd  
Email transmission 220519

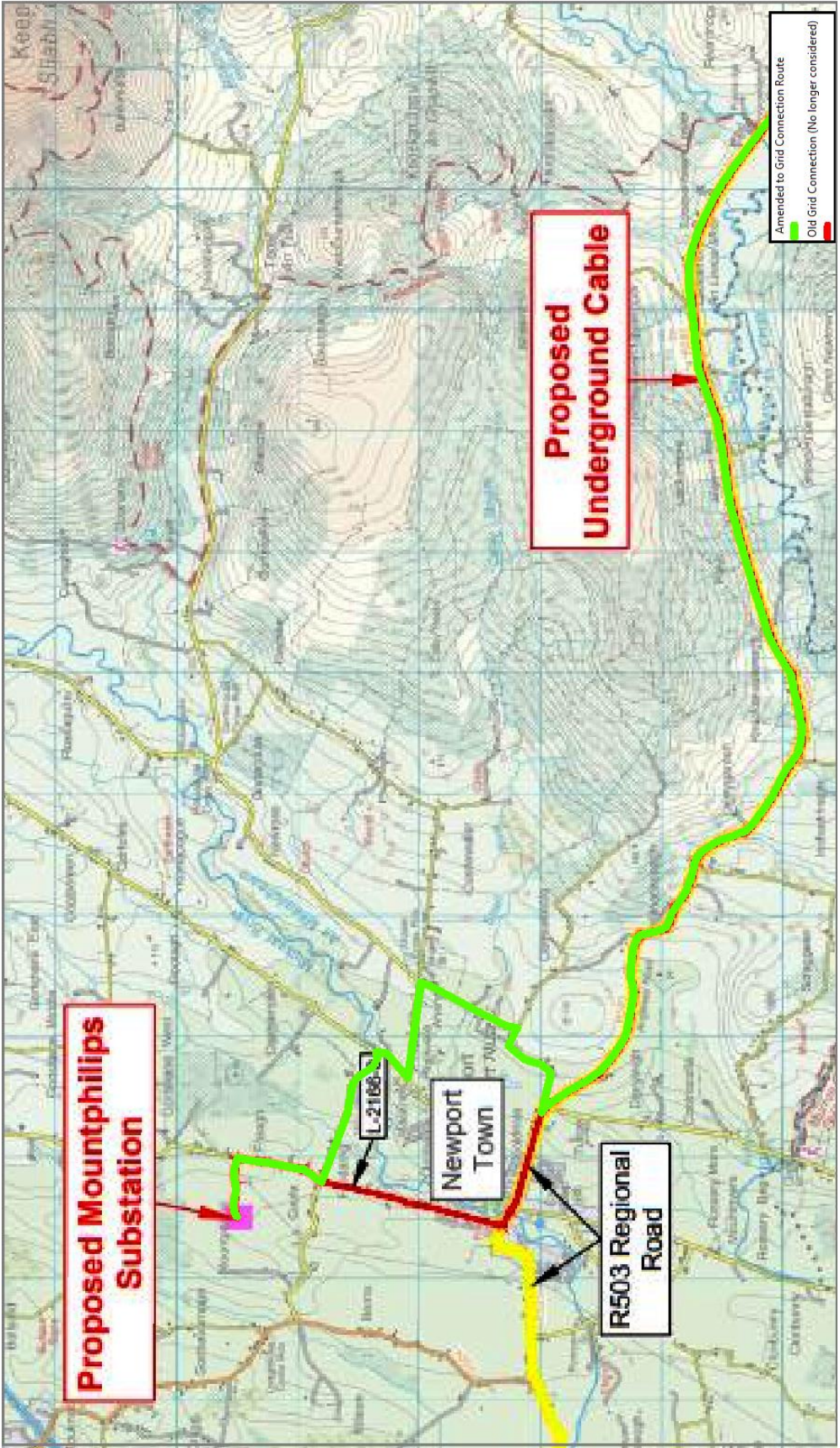


Figure 1: Proposed change to grid connection route.